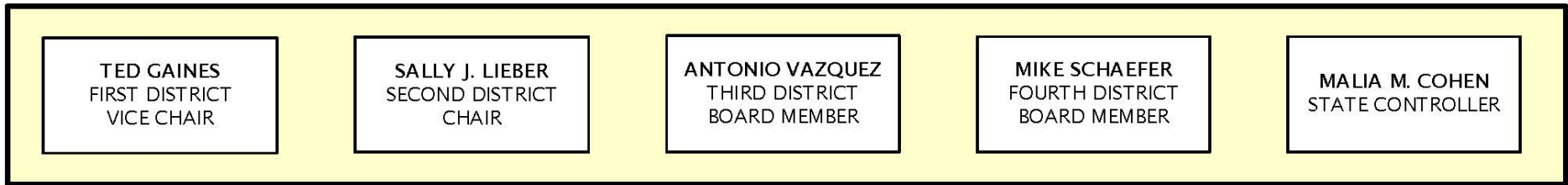




ORGANIZATION CHART



DIVERSITY & INCLUSION OFCR.
EQUAL EMPLOYMENT
OPPORTUNITY (EEO) OFFICE
Asma Ahmad-Asher

EXECUTIVE DIRECTOR
Yvette M. Stowers

ASSISTANT TO EXEC. DIR.
EXECUTIVE OFFICE
Jessica Hayes

CHIEF COUNSEL
LEGAL DEPARTMENT
Norman Scott (Acting)

CHIEF DEPUTY DIRECTOR
Lisa M. Renati

CHIEF
TAXPAYERS' RIGHTS
ADVOCATE (TRA) OFFICE
Lisa Thompson

TECHNICAL ADVISOR
PROPERTY TAXES
Adrienne Harris

TECHNICAL ADVISOR
SPECIAL TAXES
Laurel Williams

CHIEF COMMUNICATIONS OFCR.
COMMUNICATIONS DEPARTMENT
Peter Kim

DEPUTY DIRECTOR
PROPERTY TAX DEPARTMENT
David Yeung

CHIEF
LEGISLATIVE, RESEARCH &
STATISTICS DIVISION
Ted Angelo

CHIEF
BOARD PROCEEDINGS &
SUPPORT SERVICES DIVISION
Catherine Taylor

CHIEF
STATE-ASSESSED
PROPERTIES DIVISION
Jack McCool

CHIEF
COUNTY-ASSESSED
PROPERTIES DIVISION
Lauren Keach

CHIEF
ASSESSMENT PRACTICES
SURVEY DIVISION
Holly Cooper

CLERK
BOARD PROCEEDINGS
Mary Tucker Cichetti

MANAGER
SUPPORT SERVICES
Terry Leung